

AUFINE Truck Tyres

2017 V1



INFINITE FORWARD PLEASURE



AUFINE GROUP CO., LIMITED

About Us >>

Aufine Group Co., Limited is located in the most beautiful coastal city Qingdao, China, with the vision of supplying the world best tyre, best service and brand for all men happy to drive on.

To provide riders all over the world with the most superior quality tyres, Aufine carries on total quality management in design, raw material, production, quality control, testing and check, logistics, after-sales services, etc.; Nowadays, Aufine tyre is contributing to bringing safety, comfort and pleasure to every driver in the world.

Aufine is continually developing new innovations in truck, bus and passenger car tyre technology. With a full line-up of tyres tailored to nearly every commercial-use application, Aufine truck and bus tyres provide the highest possible level of safety, dependability and cost-effectiveness for different road conditions in the world.

For transportation purpose trucks, there are 4 production lines.

Aufine tyres off road line for long distance travel which is adapted to continued high speed driving and economic fuel consumption. For buses, Aufine designed express way tyres to superior high safety and lower fuel consumption and high mileage. For engineering purpose trucks, there are all weather regional renovatable high way tyre for travel medium and long-distance. Non-Highway tyres with long service life and great elasticity and tyres are for varied road services. For light commercial vehicles, Aufine light truck tyres get the increased mileage and high durability you need.

Not only relying on advanced technology, world class production and testing equipment, but also the spirits to put the best possible tyres on the road and the desire to highly satisfy the driver's expectation. Aufine tyres win high reputation from customers and different international organizations. Nowadays, Aufine tyres have got the most certifications in the tyre industry including DOT, ECE, REACH, LABELLING, S-MARK, CCC, ISO9001, TS16949, GCC, INMETRO, BIS, SMARTWAY, SASO, SONCAP, LATU, NOM, etc.

The Aufine tyre distribution network is keeping on expanding now and we are operating on more than 120 countries and regions in Asia, Africa, Europe, North America, South America and Oceania. Continued development of Aufine tyre, also bring the chance for us to provide superior service to the drivers in different regions.

Aufine pays much attention to brand culture and communication and takes personal training, serving and cooperating culture as the core stone of company cohesion and development. Aufine not only works for the development of superior quality tyres, but also promotes social activities and charity events to help and support the society development.

The sole contact between the vehicle and the road is a patch of rubber. Drivers can only trust their trucks, buses or cars to turn, stop, and go if they trust their tyres. Aufine's passionate commitment to safety and performance inspires us to supply the best tires for our customers. Where there are vehicles, there are drivers! Where there are drivers, there will be AUFINE!

Infinite forward pleasure, Aufine tyre!

General content >>

Company introduction	1
Technology guide	3
Tyre application chart	7
Long haul	9
Regional	17
Mix	27
Off road	38
Size availability	42
Size line-up	47
European Tyre Labelling	50



Cost Performance



Satisfaction

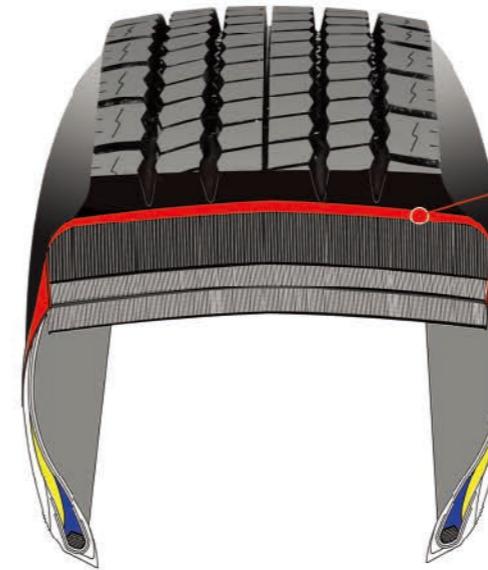


Reliability

FEATURES				Application
<p>TPI-NR Technology can maintain and improve the original features of rubber especially the dynamic features such as rolling resistance, low heating, anti-fatigue and anti-abrasion.</p>	*	*	*	
<p>Dual Apex (combination of hard and soft apex) retains the rigidity and stability of bead and improves fuel efficient and comfort.</p>	*	*	*	
<p>SWP (Sidewall Protection) protects sidewall and tyre body from crash and impact.</p>	*		*	
<p>Low Heating Technology with improving formula of tread rubber helps on fuel-saving and green performance.</p>	*		*	
<p>Self Cleaning Design efficiently helps less stone retention, avoiding damages to the groove bottom.</p>	*	*	*	
<p>Ex-Width Solid Shoulder enhances grip on road surface, comfortable handling performance and safety. Progressive, variable-width grooves reduce noise. The closed shoulder design improves anti-wear ability of tread and restrains eccentric wear of shoulder.</p>	*	*		
<p>Ex-Width Open Shoulder enhances grip on road surface, comfortable handling performance and safety. Progressive and variable-width grooves reduce noise. The open shoulder design improves strong traction and braking ability.</p>	*	*		



TPI-NR Technology



The shoulder wedge in high-stress area should possess excellent fatigue durability and good adhesivity. TRI-NR (Trans-1,4-polyisoprene blend with Natural Rubber) Technology well keeps the tensile strength and tearing strength of tyre compound, while it lowers heating and rolling resistance. This technology can increase adhesivity and decrease hardness at the same time.

High dynamic fatigue resistance and good thermal aging resistance help increase mileage.

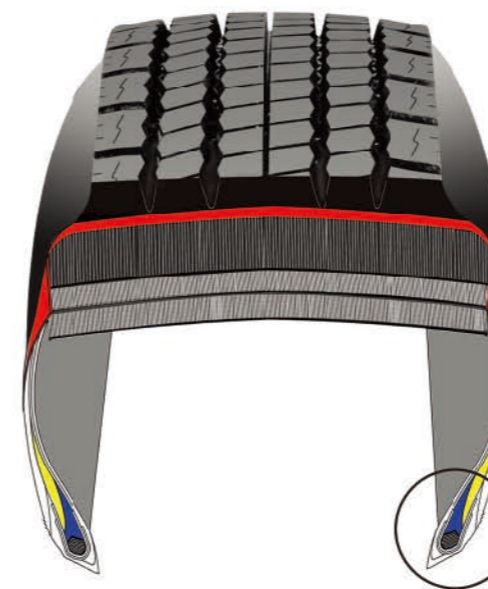
Low noise and Low rolling resistance

Lower the costs by higher mileage

Satisfaction



Dual Apex The combination of two different bead fillers: Hard Apex and Soft Apex



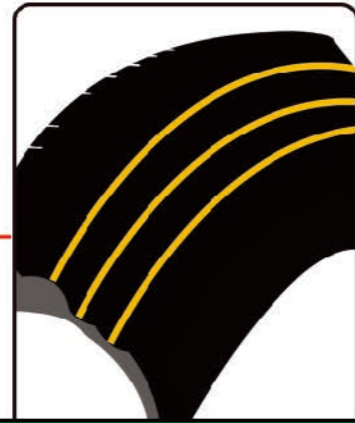
Soft Apex can keep good elasticity of tyre bead, operator comfort and anti-bending performance.

Satisfaction

Hard Apex can keep tyre bead with good stiffness, operation stability and reducing deformation.

Reliability

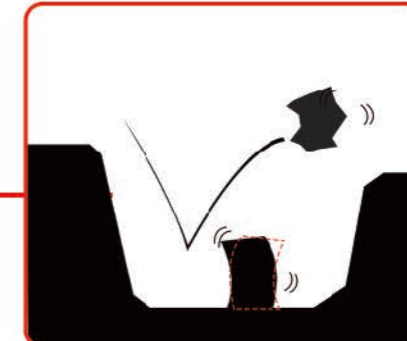
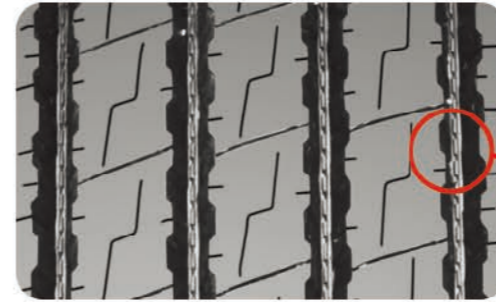
SWP Sidewall Protection



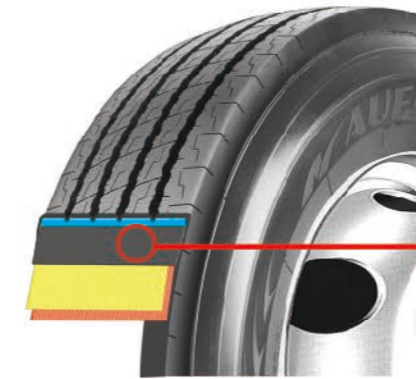
Unique sidewall design protects sidewall and tyre body from crash and impact. It also ensures stability of tyre construction and increases lifespan.

Lower the costs by higher mileage

Self Cleaning Design

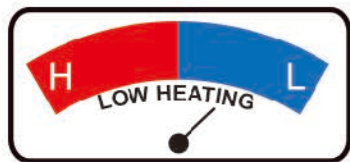


Protective ridges in the base of the tread grooves improve self cleaning properties and protect grooves from puncturing and cutting, which ensures long lifespan and higher mileage.



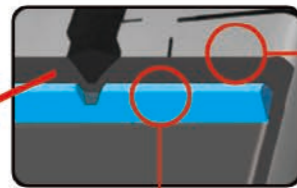
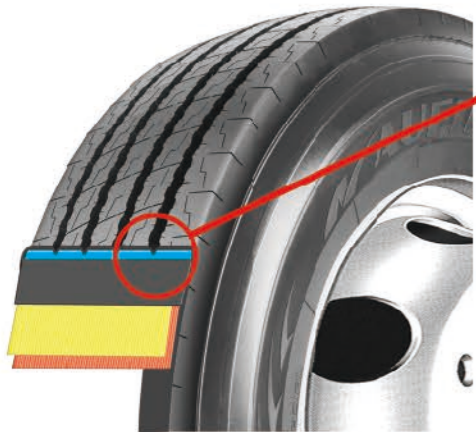
Belt ply

- Lower the costs by higher mileage
- Reliability
- Satisfaction



Low Heating Technology

The top layer provides wear resistant quality and the base rubber between the topsheet and the cord fabric includes a special component that lowers down the tyre temperature.



Crown compound is with high elasticity, good anti-wear performance, low heating and high anti-tear performance.

The base rubber on the crown offers low-heating and good anti-chip performance.

The tread rubber is the key factor of the tyre service life. High Anti-wear and low heating performance helps to improve longer mileage.

Lower the costs by higher mileage

Reliability

EX-WIDTH SOLID SHOULDER



The widened contact area provides stronger traction and ensures much safer and more comfortable handling. The closed shoulder design improves anti-wear ability of tread and restrains eccentric wear of shoulder. And it helps steady handling, lower noise, lower heating, which provides much more comfort during driving.

Satisfaction

EX-WIDTH OPEN SHOULDER



The widened contact area provides stronger traction and ensures the driving safer and more comfortable. The open shoulder with transverse block pattern design provides excellent traction and braking ability.

Satisfaction



Long Haul



Regional



Mix

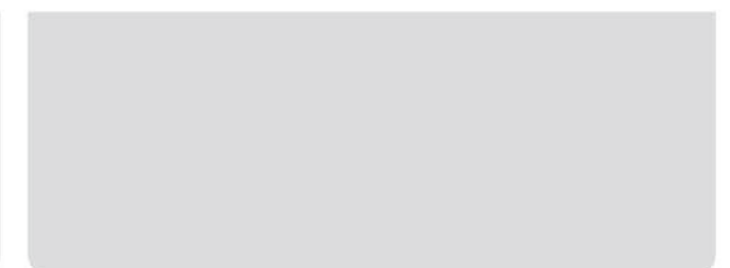
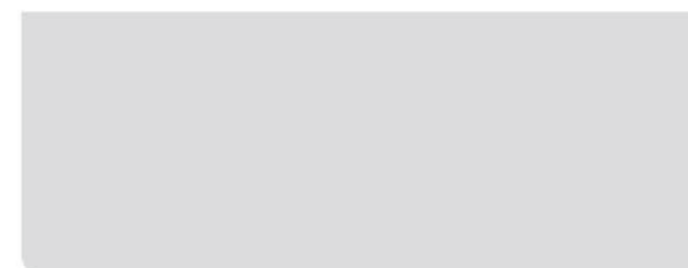
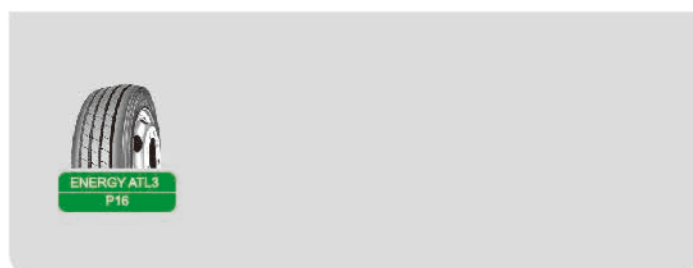
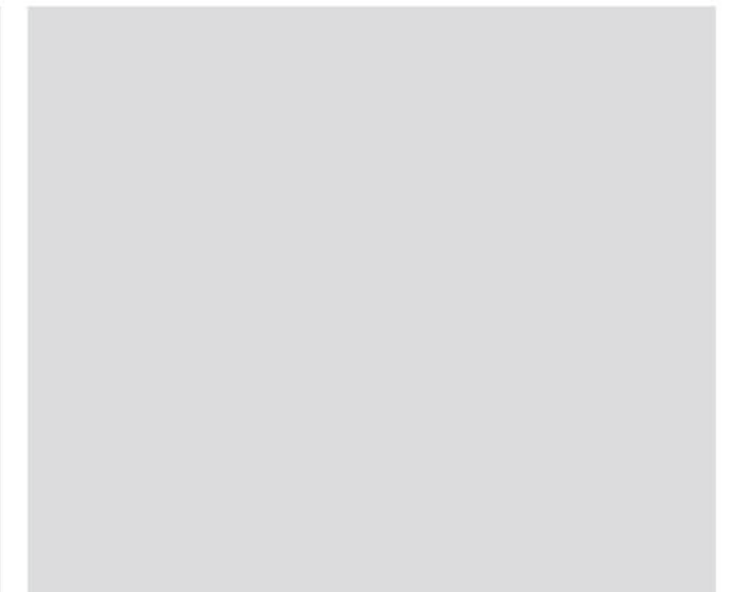
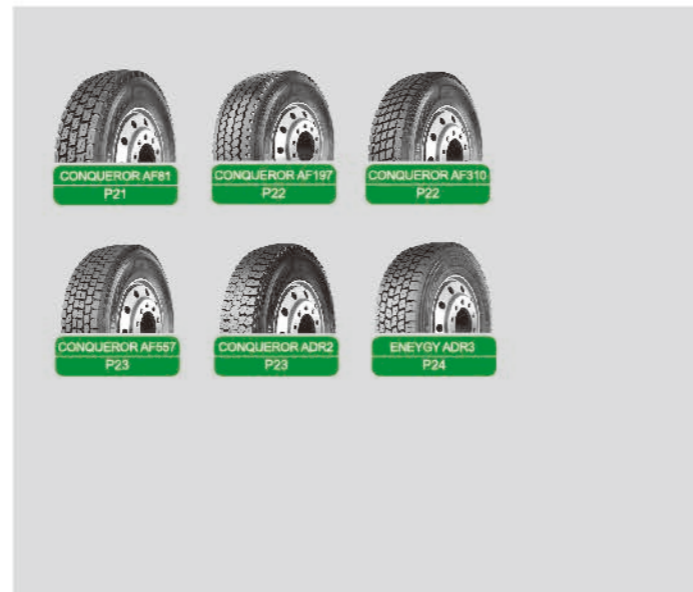
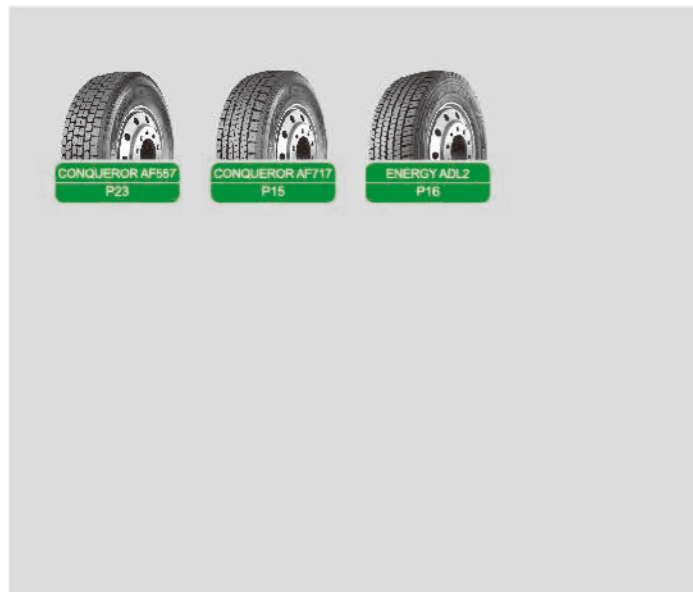
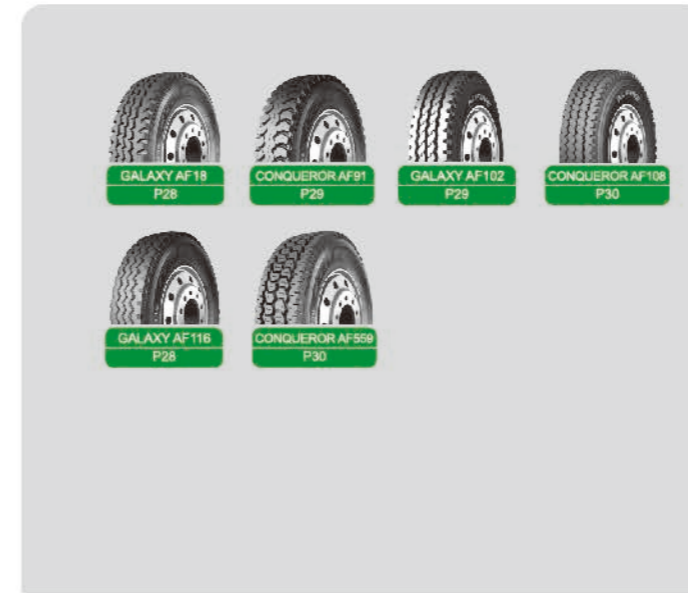


Off Road

All Position / Steer

Drive

Trailer





TRUCK&BUS RADIAL TYRE



LONG HAUL

Road character
Mainly used on highway
Application
Long distance / High speed



GALAXY AF09

ALL POSITION / STEER



- Recommend to use
- Permitted
- Not recommended to use

Excellent high speed, durability performances and lower rolling resistance by solid shoulder and solid central pattern design.

Discontinuous small block design and transverse groove offer excellent brake and traction ability.

Designed for long mileage.

Size	P.R.	Load Range	Style	Load Index	Tread Depth		Max Speed mph	Speed Rating	Overall Diameter		Overall Width		Standard Rim	Max. Tire Load Single				Max. Tire Load Dual			
					32nds	mm			in.	mm.	in.	mm.		lbs.	psi	kg.	kpa	lbs.	psi	kg.	kpa
315/80R22.5	20	L	TL	157/154	18.3	14.5	80	M	41.7	1060	12.2	310	9.00	9090	130	4125	900	8270	130	3750	900



GALAXY AF156

ALL POSITION / STEER



- Recommend to use
- Permitted
- Not recommended to use

Exceptional mileage and resistance to irregular wear.

Suitable for steer wheels and highway road application.

Excellent resistance to rib-tearing.

Excellent driving stability and durability.

Size	P.R.	Load Range	Style	Load Index	Tread Depth		Max Speed mph	Speed Rating	Overall Diameter		Overall Width		Standard Rim	Max. Tire Load Single				Max. Tire Load Dual			
					32nds	mm			in.	mm.	in.	mm.		lbs.	psi	kg.	kpa	lbs.	psi	kg.	kpa
11.00R20	18	J	TT	152/149	18.6	14.8	68	K	42.8	1087	11.3	287	8.00	7830	135	3550	930	7170	135	3250	930



GALAXY AF177

ALL POSITION / STEER



- Recommend to use
- Permitted
- Not recommended to use

In principle circumferential and continual pattern design provides lower running resistance and noise.

Special tread design provides extra ordinary anti-side-skid and anti-wet property.

Size	P.R.	Load Range	Style	Load Index	Tread Depth		Max Speed mph	Speed Rating	Overall Diameter		Overall Width		Standard Rim	Max. Tire Load Single				Max. Tire Load Dual			
					32nds	mm			in.	mm.	in.	mm.		lbs.	psi	kg.	kpa	lbs.	psi	kg.	kpa
8R22.5	14	G	TL	130/128	17.0	13.5	80	M	36.8	935	8.0	203	6.00	4190	120	1900	830	3970	120	1800	830
9R22.5	16	H	TL	139/137	18.3	14.5	80	M	38.3	974	9.0	229	6.75	5360	135	2430	930	5070	135	2300	930
10R22.5	16	H	TL	144/142	18.9	15.5	80	M	40.1	1018	10.0	254	7.50	6175	130	2800	900	5840	130	2650	900
11R22.5	16	H	TL	146/143	20.8	16.5	80	M	41.5	1054	11.0	279	8.25	6610	120	3000	830	6005	120	2725	830
11R24.5	16	H	TL	149/146	20.8	16.5	75	L	43.4	1103	11.0	279	8.25	7160	120	3250	830	6620	120	3000	830
12R22.5	18	J	TL	152/149	20.8	16.5	80	M	42.7	1084	11.8	300	9.00	7830	135	3550	930	7160	135	3250	930
13R22.5	18	J	TL	154/151	20.8	16.5	75	L	44.3	1124	12.6	320	9.75	8270	120	3750	830	7610	120	3450	830
205/75R17.5	14	G	TL	124/122	16.4	13.0	80	M	29.5	749	6.3	160	6.00	3530	110	1600	760	3310	110	1500	760
215/75R17.5	14	G	TL	126/124	16.4	13.0	80	M	30.0	761	6.8	172	6.00	3750	102	1700	700	3530	102	1600	700
215/75R17.5	16	H	TL	135/133	16.4	13.0	62	J	30.0	761	6.8	172	6.00	4805	125	2180	860	4540	125	2060	860
225/75R17.5	16	H	TL	129/127	16.4	13.0	80	M	30.6	776	7.1	180	6.75	4080	120	1850	830	3860	120	1750	830
235/75R17.5	16	H	TL	132/130	17.0	13.5	80	M	31.2	792	7.4	189	6.75	4410	112	2000	775	4190	112	1900	775
235/75R17.5	18	J	TL	143/141	17.0	13.5	62	J	31.2	792	7.4	189	6.75	6005	127	2725	875	5675	127	2575	875
245/70R17.5	16	H	TL	136/134	16.4	13.0	80	M	30.7	781	7.6	192	7.50	4940	130	2240	850	4675	130	2120	850
245/70R17.5	18	J	TL	143/141	16.4	13.0	62	J	30.7	781	7.6	192	7.50	6005	130	2725	900	5675	130	2575	900
225/70R19.5	14	G	TL	128/126	17.0	13.5	80	M	31.7	804	6.9	176	6.75	3970	110	1800	760	3750	110	1700	760
245/70R19.5	16	H	TL	136/134	17.0	13.5	80	M	32.8	832	7.6	192	7.50	4940	120	2240	830	4675	120	2120	830
245/70R19.5	18	J	TL	143/141	17.0	13.5	62	J	32.8	832	7.6	192	7.50	6005	127	2725	875	5675	127	2575	875
255/70R22.5	16	H	TL	140/137	16.4	13.0	80	M	36.6	930	10.0	255	7.50	5510	120	2500	830	5070	120	2300	830
265/70R19.5	16	H	TL	140/138	18.3	14.5	80	M	34.1	866	7.9	200	7.50	5510	120	2500	830	5205	120	2360	830
265/70R19.5	18	J	TL	143/141	18.3	14.5	62	J	34.1	866	7.9	200	7.50	6005	123	2725	850	5675	123	2575	850
285/70R19.5	16	H	TL	146/144	18.3	14.5	80	M	35.0	888	8.5	216	8.25	6610	130	3000	900	6175	130	2800	900
285/70R19.5	18	J	TL	150/148	18.3	14.5	62	J	35.0	888	8.5	216	8.25	7385	130	3350	900	6945	130	3150	900
275/70R22.5	18	H	TL	148/145	21.0	16.5	80	M	40.0	958	11.0	276	8.25	6940	130	3150	900	6395	130	2900	900
275/80R22.5	16	H	TL	149/146	20.8	16.5	80	M	39.8	1012	10.9	276	8.25	7165	123	3250	850	6620	123	3000	850
295/80R22.5	18	J	TL	154/151	20.8	16.5	80	M	41.1	1044	11.7	298	9.00	8270	130	3750	900	7610	130	3450	900
315/70R22.5	18	J	TL	156/150	19.5	15.5	80	L	42.3	1075	12.4	314	9.00	8270	130	3750	900	7385	130	3350	900
315/80R22.5	20	L	TL	157/154	20.8	16.5	80	M	42.3	1075	12.4	314	9.00	9090	130	4125	900	8270	130	3750	900



GALAXY AF128

ALL POSITION / STEER



- Recommend to use
- Permitted
- Not recommended to use

Excellent resistance to irregular wear.

Suitable for steer wheels and highway road application.

Exceptional mileage and resistance to irregular wear.

Excellent driving stability and durability.

Size	P.R.	Load Range	Style	Load Index	Tread Depth		Max Speed mph	Speed Rating	Overall Diameter		Overall Width		Standard Rim	Max. Tire Load Single				Max. Tire Load Dual			
					32nds	mm			in.	mm.	in.	mm.		lbs.	psi	kg.	kpa	lbs.	psi	kg.	kpa
11.00R20	18	J	TT	152/149	18.6	14.8	68	K	42.1	1079	11.3	290	8.00	7828	135	3550	930	7166	135	3250	930



GALAXY AF327

ALL POSITION / STEER



- Recommend to use
- Permitted
- Not recommended to use

Dual compound tread rubber helps ensure cool operating temperatures and helps keep tyre wear rate low.

Deep, wide channels help provide excellent water evacuation throughout the life of the tyre.

Lateral siping enhance traction and braking.

Size	P.R.	Load Range	Style	Load Index	Tread Depth		Max Speed mph	Speed Rating	Overall Diameter		Overall Width		Standard Rim	Max. Tire Load Single				Max. Tire Load Dual			
					32nds	mm			in.	mm.	in.	mm.		lbs.	psi	kg.	kpa	lbs.	psi	kg.	kpa
385/65R22.5	20	L	TL	160	20.8	16.5	68	K	42.2	1072	15.3	389	11.75	9920	130	4500	900	-	-	-	-
385/65R22.5	22	L	TL	160/162	20.8	16.5	68	K/L	42.2	1072	15.3	389	11.75	10500	140	4750	950	-	-	-	-



GALAXY AF558
ALL POSITION / STEER



- Recommend to use
- Permitted
- Not recommended to use

Special tread pattern design provides long mileage, low noise and excellent performance of avoiding anomalous abrasion.

Circumferential pattern design helps low rolling resistance and high speed performance.

Size	P.R.	Load Range	Style	Load Index	Tread Depth		Max Speed mph	Speed Rating	Overall Diameter		Overall Width		Standard Rim	Max. Tire Load Single				Max. Tire Load Dual			
					32nds	mm			in.	mm.	lbs.	psi		kg.	kpa	lbs.	psi	kg.	kpa		
11R22.5	16	H	TL	146/143	18.9	15.0	80	M	41.5	1054	11.0	279	8.25	6610	120	3000	830	6005	120	2725	830
11R24.5	16	H	TL	149/146	18.9	15.0	75	L	43.4	1103	11.0	279	8.25	7160	120	3250	830	6610	120	3000	830
285/75R24.5	16	H	TL	147/144	18.9	15.0	75	L	41.3	1050	11.1	283	8.25	6780	120	3075	830	6175	120	2800	830
295/75R22.5	16	H	TL	146/143	18.9	15.0	75	L	39.8	1010	11.7	298	9.00	6610	120	3000	830	6005	120	2725	830



GALAXY AF667
ALL POSITION / STEER



- Recommend to use
- Permitted
- Not recommended to use

Improved mileage and turning stability with solid shoulder and center design.

Good sideslip and mud slip resistance.

Even wear tread pattern design.

Size	P.R.	Load Range	Style	Load Index	Tread Depth		Max Speed mph	Speed Rating	Overall Diameter		Overall Width		Standard Rim	Max. Tire Load Single				Max. Tire Load Dual			
					32nds	mm			in.	mm.	lbs.	psi		kg.	kpa	lbs.	psi	kg.	kpa		
11.00R22	18	J	TT	154/151	18.9	15.0	75	L	44.7	1135	11.5	293	8.00	8270	135	3750	930	7610	135	3450	930
12R22.5	18	J	TL	152/149	18.9	15.0	80	M	42.7	1084	11.8	300	9.00	7830	135	3550	930	7160	135	3250	930
275/80R22.5	16	H	TL	149/146	18.9	15.0	80	M	39.8	1012	10.9	276	8.25	7160	123	3250	850	6620	123	3000	850
295/60R22.5	16	H	TL	150/147	17.0	13.5	75	L	36.5	926	11.5	292	9.00	7385	130	3350	900	6780	130	3075	900
295/80R22.5	18	J	TL	154/151	18.9	15.0	80	M	41.1	1044	11.7	298	9.00	8270	130	3750	900	7610	130	3450	900
305/70R22.5	16	H	TL	152/148	18.9	15.0	80	M	39.4	1000	12.0	305	9.00	7830	130	3550	900	6945	130	3150	900
305/75R24.5	16	H	TL	154/149	18.9	15.0	75	L	42.5	1080	12.0	305	9.00	8270	123	3750	850	7160	123	3250	850
315/60R22.5	16	H	TL	152/148	17.0	13.5	80	M	37.4	949	12.4	316	9.75	7830	130	3550	900	6945	130	3150	900
315/80R22.5	18	J	TL	154/151	18.9	15.0	80	M	42.3	1075	12.4	314	9.00	8270	120	3750	830	7610	120	3450	830
315/80R22.5	20	L	TL	157/154	18.9	15.0	80	M	42.3	1075	12.4	314	9.00	9090	130	4125	900	8270	130	3750	900



GALAXY AF867
ALL POSITION / STEER



- Recommend to use
- Permitted
- Not recommended to use

Wider and circumferential grooves design with extra sideslip resistance.

Low running noise and running resistance.

Size	P.R.	Load Range	Style	Load Index	Tread Depth		Max Speed mph	Speed Rating	Overall Diameter		Overall Width		Standard Rim	Max. Tire Load Single				Max. Tire Load Dual			
					32nds	mm			in.	mm.	lbs.	psi		kg.	kpa	lbs.	psi	kg.	kpa		
11.00R22	18	J	TT	154/151	18.9	15.0	75	L	44.7	1135	11.5	293	8.00	8265	135	3750	930	7605	135	3450	930
11R22.5	16	H	TL	146/143	18.9	15.0	80	M	41.5	1054	11.0	279	8.25	6610	120	3000	830	6005	120	2725	830
12R22.5	18	J	TL	152/149	18.9	15.0	80	M	42.7	1084	11.8	300	9.00	7830	135	3550	930	7160	135	3250	930
13R22.5	18	J	TL	154/151	18.9	15.0	75	L	44.3	1124	12.6	320	9.75	8270	120	3750	830	7610	120	3450	830
295/80R22.5	18	J	TL	154/151	18.9	15.0	80	M	41.1	1044	11.7	298	9.00	8270	130	3750	900	7610	130	3450	900
315/80R22.5	18	J	TL	154/151	18.9	15.0	80	M	42.3	1075	12.4	314	9.00	8270	120	3750	830	7610	120	3450	830
315/80R22.5	20	L	TL	157/154	19.8	15.0	80	M	42.3	1075	12.4	314	9.00	9090	130	4125	900	8270	130	3750	900



ENERGY AEL2
ALL POSITION / STEER



- Recommend to use
- Permitted
- Not recommended to use

Excellent mileage combined with low rolling resistance and optimum wet braking characteristics.

Improved wet braking and mileage performances and excellent wet grip.

Robust, damage resistant carcass construction for enhanced durability.

Size	P.R.	Load Range	Style	Load Index	Tread Depth		Max Speed mph	Speed Rating	Overall Diameter		Overall Width		Standard Rim	Max. Tire Load Single				Max. Tire Load Dual			
					32nds	mm			in.	mm.	lbs.	psi		kg.	kpa	lbs.	psi	kg.	kpa		
295/80R22.5	18	J	TL	154/151 152/148	20.8	16.5	75	L M	41.1	1044	11.7	298	9.00	8270	130	3750	900	7610	130	3450	900



CONQUEROR AF717

DRIVE



- Recommend to use
- Permitted
- Not recommended to use

Fuel efficient drive tyre.

No compromise on durability, irregular wear resistance and wet performance.

Excellent traction and wet weather handling.

Size	P.R.	Load Range	Style	Load Index	Tread Depth		Max Speed mph	Speed Rating	Overall Diameter		Overall Width		Standard Rim	Max. Tire Load Single				Max. Tire Load Dual			
					32nds	mm			in.	mm.	in.	mm.		lbs.	psi	kg.	kpa	lbs.	psi	kg.	kpa
11.00R22	18	J	TT	154/151	27.7	22.0	75	L	44.7	1135	11.5	293	8.00	8270	135	3750	930	7610	135	3450	930
11R22.5	16	H	TL	146/143	22.7	18.0	80	M	41.5	1054	11.0	279	8.25	6610	120	3000	830	6005	120	2725	830
12R22.5	18	J	TL	152/149	22.7	18.0	80	M	42.7	1084	11.8	300	9.00	7830	135	3550	930	7160	135	3250	930
13R22.5	18	J	TL	154/151	22.7	18.0	75	L	44.3	1124	12.6	320	9.75	8270	120	3750	830	7610	120	3450	830
205/75R17.5	14	G	TL	124/122	18.9	15.0	80	M	29.6	753	6.3	160	6.00	3530	110	1600	760	3310	110	1500	760
215/75R17.5	14	G	TL	126/124	18.9	15.0	80	M	30.1	765	6.8	172	6.00	3750	102	1700	700	3530	102	1600	700
225/75R17.5	16	H	TL	129/127	20.1	16.0	80	M	30.8	782	7.1	180	6.75	4080	120	1850	830	3860	120	1750	830
235/75R17.5	16	H	TL	132/130	20.1	16.0	80	M	31.4	797	7.4	189	6.75	4410	112	2000	775	4190	112	1900	775
245/70R17.5	16	H	TL	136/134	20.1	16.0	80	M	31.0	787	7.6	192	7.50	4940	123	2240	850	4675	123	2120	850
225/70R19.5	14	G	TL	128/126	19.6	15.5	80	M	31.8	807	6.9	176	6.75	3970	110	1800	760	3750	110	1700	760
245/70R19.5	16	H	TL	136/134	18.4	14.5	80	M	33.0	838	7.6	192	7.50	4940	120	2240	830	4675	120	2120	830
265/70R19.5	16	H	TL	140/138	19.6	15.5	80	M	34.2	869	7.9	200	7.50	5510	120	2500	830	5205	120	2360	830
285/70R19.5	16	H	TL	146/144	20.8	16.5	80	M	35.2	893	8.5	216	8.25	6610	130	3000	900	6175	130	2800	900
275/70R22.5	18	H	TL	148/145	23.5	18.5	80	M	40.0	958	11.0	276	8.25	6940	130	3150	900	6395	130	2900	900
275/80R22.5	16	H	TL	149/146	22.7	18.0	80	M	39.8	1012	10.9	276	8.25	7165	123	3250	850	6620	123	3000	850
295/80R22.5	18	J	TL	154/151	22.7	18.0	80	M	41.1	1044	11.7	298	9.00	8270	130	3750	900	7610	130	3450	900
315/70R22.5	18	J	TL	156/150	22.7	18.0	80	L	42.3	1075	12.4	314	9.00	8270	130	3750	900	7385	130	3350	900
315/80R22.5	18	J	TL	154/151	22.7	18.0	80	M	42.3	1075	12.4	314	9.00	8270	120	3750	830	7610	120	3450	830
315/80R22.5	20	L	TL	157/154	22.7	18.0	80	M	42.3	1075	12.4	314	9.00	9090	130	4125	900	8270	130	3750	900



ENERGY ADL2

DRIVE



- Recommend to use
- Permitted
- Not recommended to use

Specific design of shoulder area for high resistance against kerbing and lateral scrubbing.

Directional pattern that brings high traction performance while offering good regular wear.

Full depth inclined sipes on central grooves along with full depth sipes and grooves on shoulder for enhanced transversal and longitudinal grip and traction throughout entire tyre life.

Size	P.R.	Load Range	Style	Load Index	Tread Depth		Max Speed mph	Speed Rating	Overall Diameter		Overall Width		Standard Rim	Max. Tire Load Single				Max. Tire Load Dual			
					32nds	mm			in.	mm.	in.	mm.		lbs.	psi	kg.	kpa	lbs.	psi	kg.	kpa
315/70R22.5	18	J	TL	154/150 152/148	23.3	18.5	75	L M	40.0	1017	12.2	310	9.00	8270	130	3750	900	7390	130	3350	900
315/80R22.5	20	L	TL	156/150 154/150	26.5	21.0	75	L M	42.8	1087	12.4	314	9.00	8820	123	4000	850	7390	123	3350	850



ENERGY ATL3

TRAILER



- Recommend to use
- Permitted
- Not recommended to use

Low rolling resistance, high fuel efficiency.

Inner liner with good balance after inflation, can greatly improve the durability of belt.

Compound of Low heat releasing and high wear resistance of the tread rubber helps reach longer mileage.

Bigger contact area with the road surface provides strength evenly distributed to prevent the irregular wear.

Size	P.R.	Load Range	Style	Load Index	Tread Depth		Max Speed mph	Speed Rating	Overall Diameter		Overall Width		Standard Rim	Max. Tire Load Single				Max. Tire Load Dual			
					32nds	mm			in.	mm.	in.	mm.		lbs.	psi	kg.	kpa	lbs.	psi	kg.	kpa
11R22.5	16	H	TL	146/143	12.3	9.8	75	M	41.5	1054	11.0	279	8.25	6610	120	3000	830	6005	120	2725	830
11R24.5	16	H	TL	149/146	12.3	9.8	75	L	43.4	1103	11.0	279	8.25	7160	120	3250	830	6610	120	3000	830
285/75R24.5	16	H	TL	147/144	12.3	9.8	75	L	41.3	1050	11.1	283	8.25	6780	120	3075	830	6175	120	2800	830
295/75R22.5	16	H	TL	146/143	12.3	9.8	75	L	39.8	1010	11.7	298	9.00	6610	120	3000	830	6005	120	2725	830



TRUCK&BUS RADIAL TYRE

REGIONAL PICK UP&DELIVERY

Road character
 Mainly used on regional pick up & delivery
Application
 Medium distance and speed
 Relatively more start and brake



GALAXY AF11

ALL POSITION / STEER



- Recommend to use
- Permitted
- Not recommended to use

Solid shoulder to help withstand scrub and abrasion.
 Big tread block in middle to aid in cut resistance.
 Excellent stability.

Size	P.R.	Load Range	Style	Load Index	Tread Depth		Max Speed mph	Speed Rating	Overall Diameter		Overall Width		Standard Rim	Max. Tire Load Single				Max. Tire Load Dual			
					32nds	mm			in.	mm.	in.	mm.		lbs.	psi	kg.	kpa	lbs.	psi	kg.	kpa
12.00R24	20	L	TT	160/157	18.3	14.5	68	K	48.3	1226	12.3	313	8.50	9920	130	4500	900	9090	130	4125	900



GALAXY AF15

ALL POSITION / STEER



- Recommend to use
- Permitted
- Not recommended to use

Wide tread for long life and high speed running.
 Fuel efficient with lower rolling resistance.
 Excellent decrease the total operation costs.
 Suitable for steer and trailer wheels.

Size	P.R.	Load Range	Style	Load Index	Tread Depth		Max Speed mph	Speed Rating	Overall Diameter		Overall Width		Standard Rim	Max. Tire Load Single				Max. Tire Load Dual			
					32nds	mm			in.	mm.	in.	mm.		lbs.	psi	kg.	kpa	lbs.	psi	kg.	kpa
6.50R16LT	12	J	TT	110/105	11.3	9.0	80	L	29.1	747	7.1	182	5.50F	2337	110	1060	670	2040	110	925	670



GALAXY AF16

ALL POSITION / STEER



- Recommend to use
- Permitted
- Not recommended to use

Excellent high speed, durability performances and lower rolling resistance by solid shoulder and solid central pattern design.

Discontinuous small block design and transverse groove offer excellent brake and traction ability.

Designed for long mileage.

Size	P.R.	Load Range	Style	Load Index	Tread Depth		Max Speed mph	Speed Rating	Overall Diameter		Overall Width		Standard Rim	Max. Tire Load Single				Max. Tire Load Dual			
					32nds	mm			in.	mm.	in.	mm.		lbs.	psi	kg.	kpa	lbs.	psi	kg.	kpa
7.50R20	14	G	TT	130/126	15.7	12.5	75	L	36.8	935	8.5	215	6.00	4160	110	1885	770	3750	110	1700	770
9.00R20	16	H	TT	144/142	18.3	14.5	75	L	40.2	1022	10.2	258	7.00	6180	130	2800	900	5850	130	2650	900
10.00R20	18	J	TT	149/146	18.9	15.0	75	L	41.5	1053	10.7	273	7.50	7160	135	3250	930	6610	135	3000	930
11.00R20	18	J	TT	152/149	19.5	15.5	75	L	42.8	1087	11.3	287	8.00	7830	135	3550	930	7160	135	3250	930
12.00R20	18	J	TT	154/151	19.5	15.5	75	L	44.2	1122	12.2	310	8.50	8274	120	3750	830	7610	120	3450	830
12.00R20	20	L	TT	156/153	19.5	15.5	75	L	44.2	1122	12.2	310	8.50	8820	130	4000	900	8050	130	3650	900
11R22.5	16	H	TL	146/143	18.9	15.0	80	M	41.3	1050	11.0	279	8.25	6620	120	3000	830	6005	120	2725	830
315/80R22.5	20	L	TL	157/154	18.9	15.0	80	M	42.3	1075	12.4	314	9.00	9090	130	4125	900	8270	130	3750	900



GALAXY AF17

ALL POSITION / STEER



- Recommend to use
- Permitted
- Not recommended to use

Offset block shoulder design promotes soft soil mobility.

Discontinuous block design grooves offer excellent brake and traction ability.

Deep tread spicing designed for easy heat release, good traction performance and low noise level.

Size	P.R.	Load Range	Style	Load Index	Tread Depth		Max Speed mph	Speed Rating	Overall Diameter		Overall Width		Standard Rim	Max. Tire Load Single				Max. Tire Load Dual			
					32nds	mm			in.	mm.	in.	mm.		lbs.	psi	kg.	kpa	lbs.	psi	kg.	kpa
11.00R20	18	J	TT	152/149	18.3	14.5	75	L	42.8	1087	11.3	287	8.00	7830	135	3550	930	7170	135	3250	930



GALAXY AF33

ALL POSITION / STEER



- Recommend to use
- Permitted
- Not recommended to use

Excellent high speed, durability performances and lower rolling resistance by solid shoulder and solid central pattern design.

Discontinuous small block design and transverse groove offer excellent brake and traction ability.

Designed for long mileage.

Size	P.R.	Load Range	Style	Load Index	Tread Depth		Max Speed mph	Speed Rating	Overall Diameter		Overall Width		Standard Rim	Max. Tire Load Single				Max. Tire Load Dual			
					32nds	mm			in.	mm.	in.	mm.		lbs.	psi	kg.	kpa	lbs.	psi	kg.	kpa
385/65R22.5	20	L	TL	160	20.8	16.5	68	K	42.2	1072	15.3	389	11.75	9920	130	4500	900	-	-	-	-
425/65R22.5	18	J	TL	162	20.8	16.5	62	J	44.3	1124	16.9	430	13.00	10475	110	4750	760	-	-	-	-
425/65R22.5	20	L	TL	165	20.8	16.5	68	K	44.3	1124	16.9	430	13.00	11350	120	5150	830	-	-	-	-



GALAXY AF62

ALL POSITION / STEER



- Recommend to use
- Permitted
- Not recommended to use

Wide circumferential grooves with excellent water out from under the contact area, improved the traction on wet roads.

Four circumferential solid blocks enhance stable running and tyre life.

Size	P.R.	Load Range	Style	Load Index	Tread Depth		Max Speed mph	Speed Rating	Overall Diameter		Overall Width		Standard Rim	Max. Tire Load Single				Max. Tire Load Dual			
					32nds	mm			in.	mm.	in.	mm.		lbs.	psi	kg.	kpa	lbs.	psi	kg.	kpa
12R22.5	18	J	TL	152/149	20.2	16.0	80	M	42.7	1084	11.8	300	9.00	7830	135	3550	930	7160	135	3250	930

ENERGY AER2

ALL POSITION / STEER



- Recommend to use
- Permitted
- Not recommended to use

Newly designed tread pattern and tread compound provide an outstanding first life tyre mileage.

Unique groove rib and shoulder stone ejector prevents stone trapping and stone drilling.

Size	P.R.	Load Range	Style	Load Index	Tread Depth		Max Speed mph	Speed Rating	Overall Diameter		Overall Width		Standard Rim	Max. Tire Load Single				Max. Tire Load Dual			
					32nds	mm			in.	mm.	in.	mm.		lbs.	psi	kg.	kpa	lbs.	psi	kg.	kpa
11R22.5	16	H	TL	146/143	20.8	16.5	80	M	41.5	1054	11.0	279	8.25	6610	120	3000	830	6005	120	2725	830

CONQUEROR AF197

DRIVE



- Recommend to use
- Permitted
- Not recommended to use

All tread blocks get full contact with the ground, avoiding irregular wear and providing longer mileage.

Suitable for driving position, with high loading capability and good braking and ground grasping capability.

Size	P.R.	Load Range	Style	Load Index	Tread Depth		Max Speed mph	Speed Rating	Overall Diameter		Overall Width		Standard Rim	Max. Tire Load Single				Max. Tire Load Dual			
					32nds	mm			in.	mm.	in.	mm.		lbs.	psi	kg.	kpa	lbs.	psi	kg.	kpa
385/65R22.5	20	L	TL	160	20.8	16.5	68	K	42.2	1072	15.3	389	11.75	9920	130	4500	900	-	-	-	-

CONQUEROR AF81

DRIVE



- Recommend to use
- Permitted
- Not recommended to use

Tread block design featuring four longitudinal sipes for optimized grip and traction.

New damage resistant rubber compound for improved removal mileage.

Tread designed to minimize irregular wear.

Directional tread pattern to minimize stone retention.

Size	P.R.	Load Range	Style	Load Index	Tread Depth		Max Speed mph	Speed Rating	Overall Diameter		Overall Width		Standard Rim	Max. Tire Load Single				Max. Tire Load Dual			
					32nds	mm			in.	mm.	in.	mm.		lbs.	psi	kg.	kpa	lbs.	psi	kg.	kpa
9.00R20	16	H	TT	144/142	21.4	17.0	65	K	39.8	1021	10.1	260	7.00	6174	130	2800	900	5843	130	2650	900
10.00R20	18	J	TT	149/146	22.7	18.0	68	K	41.5	1053	10.7	273	7.50	7160	135	3250	930	6610	135	3000	930

CONQUEROR AF310

DRIVE



- Recommend to use
- Permitted
- Not recommended to use

Intended for mounting on all-position.

Advanced tread pattern with high load capacity.

Rubber compound is specially developed for all-weather tyre use.

Long mileage and increased resistance to uneven tread wear.

Size	P.R.	Load Range	Style	Load Index	Tread Depth		Max Speed mph	Speed Rating	Overall Diameter		Overall Width		Standard Rim	Max. Tire Load Single				Max. Tire Load Dual			
					32nds	mm			in.	mm.	in.	mm.		lbs.	psi	kg.	kpa	lbs.	psi	kg.	kpa
10.00R20	18	J	TT	149/146	19.5	15.5	75	L	41.2	1047	10.9	278	7.50	7160	135	3250	930	6610	135	3000	930



CONQUEROR AF557

DRIVE



- Recommend to use
- Permitted
- Not recommended to use

Medium to long-range drive tyre for highway and regional use.
Excellent wet and dry manoeuvrability.
Sidewall protector for superior durability.

Size	P.R.	Load Range	Style	Load Index	Tread Depth		Max Speed mph	Speed Rating	Overall Diameter		Overall Width		Standard Rim	Max. Tire Load Single				Max. Tire Load Dual			
					32nds	mm			in.	mm.	lbs.	psi		kg.	kpa	lbs.	psi	kg.	kpa		
10.00R20	18	J	TT	149/146	27.0	21.5	75	L	41.5	1055	10.9	278	7.50	7160	135	3250	930	6610	135	3000	930
11.00R22	18	J	TT	154/151	27.7	22.0	75	L	44.7	1135	11.5	293	8.00	8270	135	3750	930	7610	135	3450	930
12R22.5	18	J	TL	152/149	25.2	20.0	80	M	42.7	1084	11.8	300	9.00	7830	135	3550	930	7160	135	3250	930
295/60R22.5	16	H	TL	150/147	23.3	18.5	75	L	36.5	926	11.5	292	9.00	7385	130	3350	900	6780	130	3075	900
295/80R22.5	18	J	TL	154/151	25.2	20.0	80	M	41.1	1044	11.7	298	9.00	8270	130	3750	900	7610	130	3450	900
305/70R22.5	16	H	TL	152/148	27.7	22.0	80	M	39.4	1000	12.0	305	9.00	7830	130	3550	900	6945	130	3150	900
305/75R24.5	16	H	TL	154/149	27.7	22.0	75	L	42.5	1080	12.0	305	9.00	8270	123	3750	850	7160	123	3250	850
315/60R22.5	16	H	TL	152/148	23.3	18.5	80	M	37.4	949	12.4	316	9.75	7830	130	3550	900	6945	130	3150	900
315/80R22.5	18	J	TL	154/151	25.2	20.0	80	M	42.3	1075	12.4	314	9.00	8270	120	3750	830	7610	120	3450	830
315/80R22.5	20	L	TL	157/154	25.2	20.0	80	M	42.3	1075	12.4	314	9.00	9090	130	4125	900	8270	130	3750	900



CONQUEROR ADR2

DRIVE



- Recommend to use
- Permitted
- Not recommended to use

Special bead structure design improves durability of the tyre.
Tread rubber with high anti-wear ability and deeper tread provide longer mileage.
Special tread pattern design effectively improves self-clean performance.
Strong pattern provides excellent traction ability.

Size	P.R.	Load Range	Style	Load Index	Tread Depth		Max Speed mph	Speed Rating	Overall Diameter		Overall Width		Standard Rim	Max. Tire Load Single				Max. Tire Load Dual			
					32nds	mm			in.	mm.	lbs.	psi		kg.	kpa	lbs.	psi	kg.	kpa		
10.00R20	18	J	TT	149/146	24.6	19.5	75	L	41.5	1055	10.9	278	7.50	7160	135	3250	930	6610	135	3000	930
11.00R20	18	J	TT	152/149	25.8	20.5	75	L	42.8	1087	11.3	287	8.00	7830	135	3550	930	7160	135	3250	930
12.00R22.5	18	J	TL	152/149	21.4	17.0	80	M	42.7	1084	11.8	300	9.00	7830	135	3550	930	7160	135	3250	930



ENERGY ADR3

DRIVE



- Recommend to use
- Permitted
- Not recommended to use

Versatile multipurpose drive tyre for usage in a broad range of conditions.
Excellent mileage performance.
Superb traction level and high resistance against irregular wear.
Excellent durability and retreadability.

Size	P.R.	Load Range	Style	Load Index	Tread Depth		Max Speed mph	Speed Rating	Overall Diameter		Overall Width		Standard Rim	Max. Tire Load Single				Max. Tire Load Dual			
					32nds	mm			in.	mm.	lbs.	psi		kg.	kpa	lbs.	psi	kg.	kpa		
295/80R22.5	18	J	TL	154/151 152/148	26.5	21.0	75	L M	41.1	1044	11.7	298	9.00	8270	130	3750	900	7610	130	3450	900
315/70R22.5	18	J	TL	154/150 152/148	25.2	20.0	75	L M	40.0	1017	12.2	310	9.00	8270	130	3750	900	7390	130	3350	900
315/80R22.5	20	L	TL	156/150 154/150	26.5	21.0	75	L M	42.8	1087	12.4	314	9.00	8820	123	4000	850	7390	123	3350	850



ENERGY ATR2

TRAILER



- Recommend to use
- Permitted
- Not recommended to use

Tread pattern designed to provide effective water drainage and uniform wear.
Outstanding longitudinal and lateral grip on dry and wet surfaces.
Wider shoulders giving an improved resistance to scrubbing.

Size	P.R.	Load Range	Style	Load Index	Tread Depth		Max Speed mph	Speed Rating	Overall Diameter		Overall Width		Standard Rim	Max. Tire Load Single				Max. Tire Load Dual			
					32nds	mm			in.	mm.	lbs.	psi		kg.	kpa	lbs.	psi	kg.	kpa		
385/65R22.5	20	L	TL	160 158	20.8	16.5	68	K L	42.0	1067	15.2	385	11.75	9920	130	4500	900	-	-	-	-
385/55R22.5	20	L	TL	160	19.5	15.5	68	J	39.2	996	15.2	386	12.25	9920	130	4500	900	-	-	-	-



ENERGY ATR3

TRAILER



- Recommend to use
- Permitted
- Not recommended to use

Rubber compound improves resistance to accidental damage.
 Widened tread gives better ground-contact and loading capacity.
 Robust shoulder design improves resistance to lateral sideslip.

Size	P.R.	Load Range	Style	Load Index	Tread Depth		Max Speed mph	Speed Rating	Overall Diameter		Overall Width		Standard Rim	Max. Tire Load Single				Max. Tire Load Dual			
					32nds	mm			in.	mm.	in.	mm.		lbs.	psi	kg.	kpa	lbs.	psi	kg.	kpa
385/65R22.5	20	L	TL	160	20.8	16.5	68	K	42.0	1067	15.2	385	11.75	9920	130	4500	900	-	-	-	-
				158																	



ENERGY ATR6

TRAILER



- Recommend to use
- Permitted
- Not recommended to use

Rib-type pattern helps deliver a smoother ride, while the wide base design allows you to haul more.
 Special tread compounds provide resistance to irregular wear, leading to long life and reducing your cost per mile.
 Sidewall protecting ribs protect the casing by fighting damage from curbing, cutting and abrasions.

Size	P.R.	Load Range	Style	Load Index	Tread Depth		Max Speed mph	Speed Rating	Overall Diameter		Overall Width		Standard Rim	Max. Tire Load Single				Max. Tire Load Dual			
					32nds	mm			in.	mm.	in.	mm.		lbs.	psi	kg.	kpa	lbs.	psi	kg.	kpa
425/65R22.5	20	L	TL	165	20.8	16.5	68	K	44.3	1124	16.6	422	12.25	11350	120	5150	830	-	-	-	-



ENERGY ATR5

TRAILER



- Recommend to use
- Permitted
- Not recommended to use

Featuring 4 longitudinal, zig-zag grooves to provide excellent transverse grip and excellent braking performance, even on wet surfaces.
 Robust zig-zag grooves ensure excellent roadholding even on wet surfaces.
 Grooves geometry designed to prevent stone trapping.

Size	P.R.	Load Range	Style	Load Index	Tread Depth		Max Speed mph	Speed Rating	Overall Diameter		Overall Width		Standard Rim	Max. Tire Load Single				Max. Tire Load Dual			
					32nds	mm			in.	mm.	in.	mm.		lbs.	psi	kg.	kpa	lbs.	psi	kg.	kpa
385/55R19.5	18	J	TL	156	19.5	15.5	62	J	36.2	919	15.6	396	12.25	8820	130	4000	900	-	-	-	-
385/55R22.5	20	L	TL	160	19.5	15.5	62	J	39.2	996	15.2	386	12.25	9920	130	4500	900	-	-	-	-





TRUCK&BUS RADIAL TYRE



Road character

Alternate on road and off road

Application

Shorter distance, highly carrying capacity, harsh using conditions

Relatively more vehicles start and brake.



GALAXY AF18

ALL POSITION / STEER



- Recommend to use
- Permitted
- Not recommended to use

Offset block shoulder design promotes soft soil mobility.

Application specific compound to help resist aggression from chipping and cutting.

Zig-zag groove angles help resist stone retention and drilling.

Size	P.R.	Load Range	Style	Load Index	Tread Depth		Max Speed mph	Speed Rating	Overall Diameter		Overall Width		Standard Rim	Max. Tire Load Single				Max. Tire Load Dual			
					32nds	mm			in.	mm.	in.	mm.		lbs.	psi	kg.	kpa	lbs.	psi	kg.	kpa
6.50R16LT	12	F	TT	110/105	12.6	10.0	80	M	29.5	750	7.3	185	5.50F	2340	95	1060	670	2040	95	925	670
7.00R16LT	14	G	TT	118/114	16.4	13.0	75	L	30.6	776	7.9	200	5.50F	2910	110	1320	770	2600	110	1180	770
7.50R16LT	16	H	TT	124/120	15.7	12.5	75	L	31.7	805	8.5	215	6.00G	3525	125	1600	870	3085	125	1400	870
7.50R20	14	G	TT	130/126	15.7	12.5	75	L	36.8	935	8.5	215	6.00	4160	110	1885	770	3750	110	1700	770
8.25R16LT	16	H	TT	128/124	15.7	12.5	80	M	33.7	856	9.3	235	6.50H	3970	110	1800	770	3525	110	1600	770
8.25R20	16	H	TT	139/137	18.3	14.5	75	L	38.2	971	9.1	232	6.50	5360	135	2430	930	5070	135	2300	930
9.00R20	16	H	TT	144/142	19.5	15.5	75	L	40.2	1022	10.2	258	7.00	6175	130	2800	900	5850	130	2650	900
10.00R20	18	J	TT	149/146	20.8	16.5	75	L	41.5	1053	10.7	273	7.50	7160	135	3250	930	6610	135	3000	930
11.00R20	18	J	TT	152/149	21.4	17.0	75	L	42.8	1087	11.3	287	8.00	7830	135	3550	930	7160	135	3250	930
12.00R20	18	J	TT	154/151	22.0	17.5	75	L	44.2	1122	12.2	310	8.50	8270	120	3750	830	7610	120	3450	830
12.00R20	20	L	TT	156/153	22.0	17.5	75	L	44.2	1122	12.2	310	8.50	8820	130	4000	900	8050	130	3650	900
12.00R24	20	L	TT	160/157	18.3	14.5	68	K	48.3	1226	12.3	313	8.50	9920	130	4500	900	9090	130	4125	900
11R22.5	16	H	TL	146/143	20.8	16.5	80	M	41.5	1054	11.0	279	8.25	6610	120	3000	830	6005	120	2725	830
12R22.5	18	J	TL	152/149	21.4	17.0	80	M	42.7	1084	11.8	300	9.00	7830	135	3550	930	7160	135	3250	930
13R22.5	18	J	TL	154/151	22.0	17.5	75	L	44.3	1124	12.6	320	9.75	8270	120	3750	830	7610	120	3450	830
315/80R22.5	20	L	TL	157/154	21.4	17.0	80	M	42.3	1075	12.4	314	9.00	9090	130	4125	900	8270	130	3750	900

GALAXY AF116

ALL POSITION / STEER



- Recommend to use
- Permitted
- Not recommended to use



Offset, block shoulder design promotes soft soil mobility.

Zigzag groove angles help resist stone retention and drilling.

Size	P.R.	Load Range	Style	Load Index	Tread Depth		Max Speed mph	Speed Rating	Overall Diameter		Overall Width		Standard Rim	Max. Tire Load Single				Max. Tire Load Dual			
					32nds	mm			in.	mm.	in.	mm.		lbs.	psi	kg.	kpa	lbs.	psi	kg.	kpa
12.00R24	20	L	TT	160/157	18.3	14.5	68	K	48.3	1226	12.3	313	8.50	9920	130	4500	900	9090	130	4125	900



CONQUEROR AF91

ALL POSITION / STEER



- Recommend to use
- Permitted
- Not recommended to use

Deep grooves and solid central pattern design, furthest improve tyre life.
 Special tread rubber compound helps resist chipping, chunking and tearing.
 The drive axle radial designed for mixed road service of gravel-pit, earth and short distance on bitumen road.

Size	P.R.	Load Range	Style	Load Index	Tread Depth		Max Speed mph	Speed Rating	Overall Diameter		Overall Width		Standard Rim	Max. Tire Load Single				Max. Tire Load Dual			
					32nds	mm			in.	mm.	lbs.	psi		kg.	kpa	lbs.	psi	kg.	kpa		
8.25R16LT	16	H	TT	128/124	16.4	13.0	80	M	33.7	856	9.3	235	6.50H	3970	112	1800	770	3530	112	1600	770
10.00R20	18	J	TT	149/146	22.0	17.5	75	L	41.5	1053	10.7	273	7.50	7160	135	3250	930	6610	135	3000	930
11.00R20	18	J	TT	152/149	22.7	18.0	75	L	42.8	1087	11.3	287	8.00	7830	135	3550	930	7170	135	3250	930
12.00R20	18	J	TT	154/151	23.3	18.5	75	L	44.2	1122	12.2	310	8.50	8270	120	3750	830	7610	120	3450	830
12.00R20	20	L	TT	156/153	23.3	18.5	75	L	44.2	1122	12.2	310	8.50	8820	130	4000	900	8050	130	3650	900



GALAXY AF102

ALL POSITION / STEER



- Recommend to use
- Permitted
- Not recommended to use

Wide tread enables long wear life and stone retention resistance.
 Deep tread for extra-long life and good wet traction.
 Combines durability in mild off road and long life on-road with good anti-side-slip.
 Suitable for all wheels position.

Size	P.R.	Load Range	Style	Load Index	Tread Depth		Max Speed mph	Speed Rating	Overall Diameter		Overall Width		Standard Rim	Max. Tire Load Single				Max. Tire Load Dual			
					32nds	mm			in.	mm.	lbs.	psi		kg.	kpa	lbs.	psi	kg.	kpa		
11.00R20	18	J	TT	152/149	22.1	17.5	75	L	42.2	1083	11.3	290	8.00	7828	135	3550	930	7166	135	3250	930
12.00R20	18	J	TT	154/151	22.7	18.0	75	L	43.6	1119	12.2	312	8.50	8269	120	3750	830	7607	120	3450	830



GALAXY AF108

ALL POSITION / STEER



- Recommend to use
- Permitted
- Not recommended to use

Fuel efficient with lower rolling resistance.
 Excellent traction and wet weather handling.
 Wider tread and complex groove angles offers enhanced tyre life with superior resistance to irregular wear.
 Suitable for all wheel positions.

Size	P.R.	Load Range	Style	Load Index	Tread Depth		Max Speed mph	Speed Rating	Overall Diameter		Overall Width		Standard Rim	Max. Tire Load Single				Max. Tire Load Dual			
					32nds	mm			in.	mm.	lbs.	psi		kg.	kpa	lbs.	psi	kg.	kpa		
12.00R20	18	J	TT	154/151	20.8	16.5	80	L	43.6	1117	12.2	312	8.50	8269	120	3750	830	7607	120	3450	830
12R22.5	18	J	TL	152/149	20.2	16.0	80	L	42.2	1081	11.6	298	9.00	7828	135	3550	930	7166	135	3250	930



CONQUEROR AF559

ALL POSITION / STEER



- Recommend to use
- Permitted
- Not recommended to use

Alternating groove and tread block design can smoothly run over with less noise and running resistance.
 Cut and chip resistant compound.
 Reinforced belt package for added retreadability.

Size	P.R.	Load Range	Style	Load Index	Tread Depth		Max Speed mph	Speed Rating	Overall Diameter		Overall Width		Standard Rim	Max. Tire Load Single				Max. Tire Load Dual			
					32nds	mm			in.	mm.	lbs.	psi		kg.	kpa	lbs.	psi	kg.	kpa		
11R22.5	16	H	TL	146/143	28.3	22.5	80	M	41.5	1054	11.0	279	8.25	6610	120	3000	830	6005	120	2725	830
11R24.5	16	H	TL	149/146	28.3	22.5	75	L	43.4	1103	11.0	279	8.25	7160	120	3250	830	6610	120	3000	830
285/75R24.5	16	H	TL	147/144	28.3	22.5	75	L	41.3	1050	11.1	283	8.25	6780	120	3075	830	6175	120	2800	830
295/75R22.5	16	H	TL	146/143	28.3	22.5	75	L	39.8	1010	11.7	298	9.00	6610	120	3000	830	6005	120	2725	830



CONQUEROR AF85

DRIVE



- Recommend to use
- Permitted
- Not recommended to use

Good driving capability on rough road conditions offered by ordinary block design.
Suitable for rough road condition in a medium-short distance application.

Size	P.R.	Load Range	Style	Load Index	Tread Depth		Max Speed mph	Speed Rating	Overall Diameter		Overall Width		Standard Rim	Max. Tire Load Single				Max. Tire Load Dual			
					32nds	mm			in.	mm.	in.	mm.		lbs.	psi	kg.	kpa	lbs.	psi	kg.	kpa
10.00R20	18	J	TT	149/146	22.7	18.0	62	J	41.6	1056	10.7	273	7.50	7160	135	3250	930	6610	135	3000	930
11.00R20	18	J	TT	152/149	23.9	19.0	62	J	43.0	1091	11.3	287	8.00	7830	135	3550	930	7160	135	3250	930
12.00R20	18	J	TT	154/151	25.8	20.5	68	K	44.4	1128	12.2	310	8.50	8270	120	3750	830	7610	120	3450	830
12.00R20	20	L	TT	156/153	25.8	20.5	62	J	44.4	1128	12.2	310	8.50	8820	130	4000	900	8050	130	3650	900

CONQUEROR AF88

DRIVE



- Recommend to use
- Permitted
- Not recommended to use

Improved traction due to new directional tread design.
Excellent protection from shocks, snags and impacts due to extra-thick sidewall.

Size	P.R.	Load Range	Style	Load Index	Tread Depth		Max Speed mph	Speed Rating	Overall Diameter		Overall Width		Standard Rim	Max. Tire Load Single				Max. Tire Load Dual			
					32nds	mm			in.	mm.	in.	mm.		lbs.	psi	kg.	kpa	lbs.	psi	kg.	kpa
12R22.5	18	J	TL	152/149	25.2	20.0	68	K	42.7	1084	11.8	300	9.00	7830	135	3550	930	7160	135	3250	930
13R22.5	18	J	TL	154/151	26.5	21.0	68	K	44.3	1124	12.6	320	9.75	8270	120	3750	830	7610	120	3450	830
295/80R22.5	18	J	TL	154/151	23.9	19.0	68	K	41.1	1044	11.7	298	9.00	8270	130	3750	900	7610	130	3450	900
315/80R22.5	20	L	TL	157/154	26.5	21.0	68	K	42.4	1078	12.4	314	9.00	9090	130	4125	900	8270	130	3750	900

CONQUEROR AF142

DRIVE



- Recommend to use
- Permitted
- Not recommended to use

One of the most popular tread patterns with all-steel casing.
Low rolling resistance helps to reduce fuel consumption.
Great traction characteristics on dry and wet roads.
Rubber compound is specially developed for all-weather tyre use.
High load capacity, high casing durability and resistance to damage.

Size	P.R.	Load Range	Style	Load Index	Tread Depth		Max Speed mph	Speed Rating	Overall Diameter		Overall Width		Standard Rim	Max. Tire Load Single				Max. Tire Load Dual			
					32nds	mm			in.	mm.	in.	mm.		lbs.	psi	kg.	kpa	lbs.	psi	kg.	kpa
9.00R20	16	H	TT	144/142	23.3	18.5	75	L	40.3	1024	10.2	260	7.00	6180	130	2800	900	5850	130	2650	900

CONQUEROR AF186

DRIVE



- Recommend to use
- Permitted
- Not recommended to use

Mixed block deeper patterns, widening road surface design to increase tyre grip.
Use of cut-resistant, anti-stab bar, wear of the tread formulation, an increase of tire wear resistance.
Applicable to various non-paved roads.

Size	P.R.	Load Range	Style	Load Index	Tread Depth		Max Speed mph	Speed Rating	Overall Diameter		Overall Width		Standard Rim	Max. Tire Load Single				Max. Tire Load Dual			
					32nds	mm			in.	mm.	in.	mm.		lbs.	psi	kg.	kpa	lbs.	psi	kg.	kpa
7.00R16LT	14	G	TT	118/114	18.9	15.0	68	K	30.7	781	7.9	200	5.50F	2910	110	1320	770	2600	110	1180	770
7.50R16LT	16	H	TT	124/120	18.9	15.0	68	K	31.9	810	8.5	215	6.00G	3525	125	1600	870	3085	125	1400	870
8.25R16LT	16	H	TT	128/124	19.5	15.5	68	K	33.9	862	9.3	235	6.50H	3970	112	1800	770	3530	112	1600	770
8.25R20	16	H	TT	139/137	20.8	16.5	68	K	38.4	975	9.1	232	6.50	5360	135	2430	930	5070	135	2300	930
9.00R20	16	H	TT	144/142	23.3	18.5	68	K	40.5	1028	10.2	258	7.00	6180	130	2800	900	5850	130	2650	900
10.00R20	18	J	TT	149/146	24.5	19.5	68	K	41.7	1059	10.7	273	7.50	7160	135	3250	930	6610	135	3000	930
11.00R20	18	J	TT	152/149	25.8	20.5	68	K	43.1	1094	11.3	287	8.00	7830	135	3550	930	7160	135	3250	930
12.00R20	18	J	TT	154/151	27.1	21.5	68	K	44.5	1130	12.2	310	8.50	8270	120	3750	830	7610	120	3450	830
12.00R20	20	L	TT	156/153	27.1	21.5	68	K	44.5	1130	12.2	310	8.50	8820	130	4000	900	8050	130	3650	900



CONQUEROR AF281

DRIVE



- Recommend to use
- Permitted
- Not recommended to use

All-season tube-type truck tyre with universal tread pattern on all-steel casing.
Great traction characteristics on dry and wet roads.
Rubber compound is specially developed for all-weather tyre use.
High load capacity, high casing durability and resistance to damage.

Size	P.R.	Load Range	Style	Load Index	Tread Depth		Max Speed mph	Speed Rating	Overall Diameter		Overall Width		Standard Rim	Max. Tire Load Single				Max. Tire Load Dual			
					32nds	mm			in.	mm.	in.	mm.		lbs.	psi	kg.	kpa	lbs.	psi	kg.	kpa
10.00R20	18	J	TT	149/146	21.4	17.0	75	L	41.3	1050	10.9	278	7.50	7160	135	3250	930	6610	135	3000	930

CONQUEROR AF701

DRIVE



- Recommend to use
- Permitted
- Not recommended to use

Suitable tyre for trucks and buses.
Unique pattern design offers superior resistance to irregular wearing.
High resistance to cuts and stone damage.
Suitable for drive wheels.

Size	P.R.	Load Range	Style	Load Index	Tread Depth		Max Speed mph	Speed Rating	Overall Diameter		Overall Width		Standard Rim	Max. Tire Load Single				Max. Tire Load Dual			
					32nds	mm			in.	mm.	in.	mm.		lbs.	psi	kg.	kpa	lbs.	psi	kg.	kpa
12R22.5	18	J	TL	152/149	25.8	20.5	80	M	42.5	1089	11.6	298	9.00	7828	135	3550	930	7166	135	3250	930

CONQUEROR AF304

DRIVE



- Recommend to use
- Permitted
- Not recommended to use

Designed for exploitation in heavy duty conditions.
New tread wear resistant components of rubber compound for tread and sidewall, intended for protection from cuts, provide long mileage.
Rubber compound is specially developed for low temperature tyre use.

Size	P.R.	Load Range	Style	Load Index	Tread Depth		Max Speed mph	Speed Rating	Overall Diameter		Overall Width		Standard Rim	Max. Tire Load Single				Max. Tire Load Dual			
					32nds	mm			in.	mm.	in.	mm.		lbs.	psi	kg.	kpa	lbs.	psi	kg.	kpa
12.00R20	18	J	TT	154/151	23.9	19.0	75	L	44.2	1122	12.3	312	8.50	8270	123	3750	850	7610	123	3450	850

CONQUEROR AF702

DRIVE



- Recommend to use
- Permitted
- Not recommended to use

Resistance to irregular wear.
High level of traction for on and off road.
Wider and deeper tread using a special rubber compound designed to extend the life of the tyre.
Suitable for drive and trailer wheels.

Size	P.R.	Load Range	Style	Load Index	Tread Depth		Max Speed mph	Speed Rating	Overall Diameter		Overall Width		Standard Rim	Max. Tire Load Single				Max. Tire Load Dual			
					32nds	mm			in.	mm.	in.	mm.		lbs.	psi	kg.	kpa	lbs.	psi	kg.	kpa
11.00R20	18	J	TT	152/149	23.3	18.5	62	K	42.5	1091	11.3	290	8.00	7828	135	3550	930	7166	135	3250	930
12.00R20	18	J	TT	154/151	25.2	20.0	68	K	44.0	1127	12.2	312	8.50	8269	120	3750	830	7607	120	3450	830



CONQUEROR AF705

DRIVE



- Recommend to use
- Permitted
- Not recommended to use

Suitable for steer and drive wheel fitment.
 Suitable for both on and off road applications.
 Super level of traction.
 Resistant to cuts and stone retention.



Size	P.R.	Load Range	Style	Load Index	Tread Depth		Max Speed mph	Speed Rating	Overall Diameter		Overall Width		Standard Rim	Max. Tire Load Single				Max. Tire Load Dual			
					32nds	mm			in.	mm.	lbs.	psi		kg.	kpa	lbs.	psi	kg.	kpa		
11.00R20	18	J	TT	152/149	25.2	20.0	62	K	42.7	1094	11.3	290	8.00	7828	135	3550	930	7166	135	3250	930
12.00R20	18	J	TT	154/151	27.1	21.5	68	K	44.1	1130	12.2	312	8.50	8269	120	3750	830	7607	120	3450	830



CONQUEROR AF707

DRIVE



- Recommend to use
- Permitted
- Not recommended to use

Cut resistant with good self-cleaning properties.
 Resistance to irregular wear.
 Very popular fitment for drive wheel.
 Wider and deeper tread using a special rubber compound designed to extend the life of the tyre.



Size	P.R.	Load Range	Style	Load Index	Tread Depth		Max Speed mph	Speed Rating	Overall Diameter		Overall Width		Standard Rim	Max. Tire Load Single				Max. Tire Load Dual			
					32nds	mm			in.	mm.	lbs.	psi		kg.	kpa	lbs.	psi	kg.	kpa		
11R22.5	16	H	TL	146/143	24.6	19.5	80	L	41.2	1057	10.7	275	8.25	6615	120	3000	830	6009	120	2725	830
11R24.5	16	H	TL	149/146	24.6	19.5	75	L	43.3	1109	10.7	275	8.25	7166	120	3250	830	6615	120	3000	830

CONQUEROR AF706

DRIVE



- Recommend to use
- Permitted
- Not recommended to use

Resistance to irregular wear.
 High level of traction for on and off road.
 Wider and deeper tread using special rubber compound designed to extend the life of the tyre.
 Suitable for drive wheels.



Size	P.R.	Load Range	Style	Load Index	Tread Depth		Max Speed mph	Speed Rating	Overall Diameter		Overall Width		Standard Rim	Max. Tire Load Single				Max. Tire Load Dual			
					32nds	mm			in.	mm.	lbs.	psi		kg.	kpa	lbs.	psi	kg.	kpa		
12R22.5	18	J	TL	152/149	26.5	21.0	80	L	42.3	1085	11.9	305	9.00	7828	135	3550	930	7166	135	3250	930

CONQUEROR AF708

DRIVE



- Recommend to use
- Permitted
- Not recommended to use

Wide deep tread pattern allows for a long wear life.
 Excellent performance for driving and braking.
 New tread design giving excellent traction and cut resistance.
 Very popular fitment for drive wheel.



Size	P.R.	Load Range	Style	Load Index	Tread Depth		Max Speed mph	Speed Rating	Overall Diameter		Overall Width		Standard Rim	Max. Tire Load Single				Max. Tire Load Dual			
					32nds	mm			in.	mm.	lbs.	psi		kg.	kpa	lbs.	psi	kg.	kpa		
11R22.5	16	H	TL	146/143	29.0	23.0	80	L	41.5	1064	10.7	275	8.25	6615	120	3000	830	6009	120	2725	830
11R24.5	16	H	TL	149/146	29.0	23.0	75	L	43.5	1116	10.7	275	8.25	7166	120	3250	830	6615	120	3000	830



ENERGY ADM3

DRIVE



- Recommend to use
- Permitted
- Not recommended to use

BIGFOOT decorative pattern design is especially for mixed road.
 M+S pattern design ensures powerful driving on icy and snowing roads.
 Special tread design effectively improves self-cleaning.
 High strength tyre crown and carcass improve the tyre blast resistance, ensure driving safety.
 Strong pattern provides powerful traction.

Size	P.R.	Load Range	Style	Load Index	Tread Depth		Max Speed mph	Speed Rating	Overall Diameter		Overall Width		Standard Rim	Max. Tire Load Single				Max. Tire Load Dual			
					32nds	mm			in.	mm.	in.	mm.		lbs.	psi	kg.	kpa	lbs.	psi	kg.	kpa
10.00R20	18	J	TT	149/146	25.2	20.0	68	K	41.5	1053	10.7	273	7.50	7160	135	3250	930	6610	135	3000	930



ENERGY ADM5

DRIVE



- Recommend to use
- Permitted
- Not recommended to use

Robust, hardwearing, safe and reliable.
 Specially designed, particularly strong three-row block-type tread.
 Excellent traction on stony, sandy or muddy ground.
 Special tread design effectively improves self-cleaning.
 High resistance to punctures caused by nails and sharp stones.

Size	P.R.	Load Range	Style	Load Index	Tread Depth		Max Speed mph	Speed Rating	Overall Diameter		Overall Width		Standard Rim	Max. Tire Load Single				Max. Tire Load Dual			
					32nds	mm			in.	mm.	in.	mm.		lbs.	psi	kg.	kpa	lbs.	psi	kg.	kpa
10.00R20	18	J	TT	149/146	25.2	20.0	68	K	41.5	1053	10.7	273	7.50	7160	135	3250	930	6610	135	3000	930

TRUCK&BUS RADIAL TYRE TYRE FOR MINING OR OFF ROAD



Road character

Mainly used on mining area and relatively poor road surface

Application

Shorter distance, highly carrying capacity, extremely bad working conditions.



CONQUEROR AF73

ALL POSITION / STEER



- Recommend to use
- Permitted
- Not recommended to use

Larger and stronger tread block design.
High traction and cut resistance.
Extra stronger carcass and bead design for extra heavy load.

Size	P.R.	Load Range	Style	Load Index	Tread Depth		Max Speed mph	Speed Rating	Overall Diameter		Overall Width		Standard Rim	Max. Tire Load Single				Max. Tire Load Dual			
					32nds	mm			in.	mm.	lbs.	psi		kg.	kpa	lbs.	psi	kg.	kpa		
10.00R20	18	J	TT	149/146	32.8	26.0	65	D	42.4	1076	10.9	278	7.50	7160	135	3250	930	6610	135	3000	930
11.00R20	18	J	TT	152/149	32.8	26.0	65	D	43.5	1104	11.3	287	8.00	7830	135	3550	930	7160	135	3250	930
12.00R20	18	J	TT	154/151	32.8	26.0	65	D	44.9	1140	12.3	312	8.50	8270	120	3750	830	7610	120	3450	830
12.00R20	20	L	TT	156/153	32.8	26.0	65	D	44.9	1140	12.3	312	8.50	8820	130	4000	900	8050	130	3650	900



CONQUEROR AF97

ALL POSITION / STEER



- Recommend to use
- Permitted
- Not recommended to use

Optimized combination of high speed and anti-cut ability provided by coherent big block pattern design.
Deep and wide tread pattern provide excellent traction in all-terrain road conditions.

Size	P.R.	Load Range	Style	Load Index	Tread Depth		Max Speed mph	Speed Rating	Overall Diameter		Overall Width		Standard Rim	Max. Tire Load Single				Max. Tire Load Dual			
					32nds	mm			in.	mm.	lbs.	psi		kg.	kpa	lbs.	psi	kg.	kpa		
9.00R20	16	H	TT	144/142	25.2	20.0	62	J	40.2	1022	10.2	258	7.00	6180	130	2800	900	5850	130	2650	900
10.00R20	18	J	TT	149/146	25.8	20.5	62	J	41.7	1060	10.9	278	7.50	7160	135	3250	930	6610	135	3000	930
11.00R20	18	J	TT	152/149	26.5	21.0	62	J	43.1	1094	11.4	290	8.00	7830	135	3550	930	7160	135	3250	930
12.00R20	18	J	TT	154/151	27.1	21.5	62	J	44.5	1130	12.2	310	8.50	8270	120	3750	830	7610	120	3450	830
12.00R20	20	L	TT	156/153	27.1	21.5	62	J	44.5	1130	12.2	310	8.50	8820	130	4000	900	8050	130	3650	900
12.00R24	20	L	TT	160/157	29.0	21.0	68	J	48.4	1230	12.4	316	8.50	9920	130	4500	900	9090	130	4125	900



CONQUEROR AF166

ALL POSITION / STEER



- Recommend to use
- Permitted
- Not recommended to use

Wide tread enables long wear life with stability and durability.
Deep tread for extra-long life and excellent traction.
Cut resistance with good self-cleaning properties in harsh conditions.
Suitable for all wheel position on mining vehicles.

Size	P.R.	Load Range	Style	Load Index	Tread Depth		Max Speed mph	Speed Rating	Overall Diameter		Overall Width		Standard Rim	Max. Tire Load Single				Max. Tire Load Dual			
					32nds	mm			in.	mm.	lbs.	psi		kg.	kpa	lbs.	psi	kg.	kpa		
11.00R20	18	J	TT	152/149	30.2	24.0	65	D	42.9	1100	11.3	290	8.00	7828	135	3550	930	7166	135	3250	930
12.00R20	18	J	TT	154/151	30.2	24.0	65	D	44.0	1127	12.2	312	8.50	8269	120	3750	830	7607	120	3450	830



CONQUEROR AF169

ALL POSITION / STEER



- Recommend to use
- Permitted
- Not recommended to use

Wide tread enables long wear life with stability and durability.
Deep tread for extra-long life and excellent traction.
Cut resistance with good self-cleaning properties in harsh conditions.
Suitable for all wheels position on mining vehicles.

Size	P.R.	Load Range	Style	Load Index	Tread Depth		Max Speed mph	Speed Rating	Overall Diameter		Overall Width		Standard Rim	Max. Tire Load Single				Max. Tire Load Dual			
					32nds	mm			in.	mm.	lbs.	psi		kg.	kpa	lbs.	psi	kg.	kpa		
8.25R16LT	16	H	TT	128/124	22.7	18.0	65	D	33.7	865	9.1	233	6.50H	3969	115	1800	770	3528	115	1600	770
8.25R20	16	H	TT	139/137	22.7	18.0	65	D	37.9	973	9.1	233	6.50	5358	135	2430	930	5072	135	2300	930
11.00R20	18	J	TT	152/149	29.0	23.0	65	D	42.9	1100	11.3	290	8.00	7828	135	3550	930	7166	135	3250	930
12.00R20	18	J	TT	154/151	30.2	24.0	65	D	44.3	1135	12.2	312	8.50	8269	120	3750	830	7607	120	3450	830



CONQUEROR AF189

ALL POSITION / STEER



- Recommend to use
- Permitted
- Not recommended to use

Wide and thick blocks, extra deep tread depth, offer excellent traction. Designed with strong structure, good load capacity. Long service life, good anti-wear and anti-puncture attributes. Suitable to mine and mountain roads.

Size	P.R.	Load Range	Style	Load Index	Tread Depth		Max Speed mph	Speed Rating	Overall Diameter		Overall Width		Standard Rim	Max. Tire Load Single				Max. Tire Load Dual			
					32nds	mm			in.	mm.	in.	mm.		lbs.	psi	kg.	kpa	lbs.	psi	kg.	kpa
7.00R16LT	14	H	TT	118/114	20.2	16.0	65	D	30.5	782	7.9	202	5.50F	2911	115	1320	770	2602	115	1180	770
7.50R16LT	16	H	TT	124/120	20.2	16.0	65	D	31.5	808	8.6	220	6.00G	3528	125	1600	870	3087	125	1400	870
8.25R16LT	16	H	TT	128/124	22.7	18.0	65	D	34.1	865	9.2	233	6.50H	3970	112	1800	770	3530	112	1600	770
9.00R20	16	J	TT	144/142	24.6	19.5	65	D	40.1	1028	10.1	260	7.00	6174	130	2800	900	5843	130	2650	900
10.00R20	18	J	TT	149/146	27.7	22.0	65	D	41.7	1060	10.9	278	7.50	7160	135	3250	930	6610	135	3000	930
11.00R20	18	J	TT	152/149	29.0	23.0	65	D	43.3	1100	11.4	290	8.00	7830	135	3550	930	7160	135	3250	930
12.00R20	18	J	TT	154/151	30.2	24.0	65	D	44.7	1135	12.3	312	8.50	8270	120	3750	830	7610	120	3450	830



CONQUEROR AF737

ALL POSITION / STEER









- Recommend to use
- Permitted
- Not recommended to use

Wide lug pattern with open shoulder design provides strong traction. Anti-skipping sidewall design provides strong anti-puncturing ability on bad road surface and improves durability of the tire body. Big blocks design can shoulder ground pressure more efficiently and keep good performance even on mixed road condition. Deeper tread pattern design ensure longer tyre lifetime.

Size	P.R.	Load Range	Style	Load Index	Tread Depth		Max Speed mph	Speed Rating	Overall Diameter		Overall Width		Standard Rim	Max. Tire Load Single				Max. Tire Load Dual			
					32nds	mm			in.	mm.	in.	mm.		lbs.	psi	kg.	kpa	lbs.	psi	kg.	kpa
14.00R20	★★	-	-	-	31.5	25.0	50	H	49.0	1245	14.8	375	10.00	11000	102	5000	700	-	-	-	-

PATTERN	SIZE	LOAD INDEX	SPEED RATING			
GALAXY AF09 /P10	315/80R22.5	157/154	M	C	C	73dB
GALAXY AF11 /P18	12.00R24	160/157	K			
GALAXY AF16 /P19	7.50R20	130/126	L			
	9.00R20	144/142	L			
	10.00R20	149/146	L			
	11.00R20	152/149	L			
	12.00R20	154/151	L			
		156/153	L			
GALAXY AF17 /P19	11R22.5	146/143	M			
	315/80R22.5	157/154	M			
GALAXY AF18 /P28	11.00R20	152/149	L			
	7.00R16LT	118/114	L	E	C	76dB
	7.50R16LT	124/120	L	E	C	76dB
	7.50R20	130/126	L	E	C	76dB
	8.25R16LT	128/124	M	E	C	76dB
	8.25R20	139/137	L	E	C	76dB
	9.00R20	144/142	L	E	C	76dB
	10.00R20	149/146	L	E	C	76dB
	11.00R20	152/149	L	E	C	76dB
	12.00R20	154/151	L	E	C	76dB
		156/153	L	E	C	76dB
	12.00R24	160/157	K	E	C	76dB
	12R22.5	152/149	M	E	C	76dB
13R22.5	154/151	L	E	C	76dB	
GALAXY AF33 /P20	315/80R22.5	157/154	M	E	C	76dB
	385/65R22.5	160	K	C	C	76dB
GALAXY AF62 /P20	425/65R22.5	162	J	C	C	76dB
		165	K	C	C	76dB
CONQUEROR AF73 /P39	12R22.5	152/149	M			
	10.00R20	149/146	D			
	11.00R20	152/149	D			
CONQUEROR AF81 /P21	12.00R20	154/151	D			
		156/153	D			
CONQUEROR AF85 /P31	10.00R20	149/146	K			
	10.00R20	149/146	J			
	11.00R20	152/149	J			
	12.00R20	154/151	K			
CONQUEROR AF88 /P31		156/153	J			
	12R22.5	152/149	K	C	C	73dB
	13R22.5	154/151	K	C	D	73dB
CONQUEROR AF91 /P29	315/80R22.5	157/154	K	C	D	73dB
	8.25R16LT	128/124	M			
CONQUEROR AF91 /P29	10.00R20	149/146	L			
	11.00R20	152/149	L			

PATTERN	SIZE	LOAD INDEX	SPEED RATING				
CONQUEROR AF91 /P29	12.00R20	154/151	J				
		156/153	J				
CONQUEROR AF97 /P39	9.00R20	144/142	J				
	10.00R20	149/146	J				
	11.00R20	152/149	J				
	12.00R20	154/151	J				
	12.00R24	160/157	J				
GALAXY AF116 /P28	12.00R24	160/157	K				
CONQUEROR AF142 /P32	9.00R20	144/142	L				
GALAXY AF156 /P10	11.00R20	152/149	K				
GALAXY AF177 /P11	8R22.5	130/128	M	E	C	71dB	
	9R22.5	139/137	M	E	C	71dB	
	10R22.5	144/142	M	E	C	71dB	
	11R22.5	146/143	M	E	C	71dB	
	12R22.5	152/149	M	E	C	71dB	
	13R22.5	154/151	L	E	C	71dB	
	205/75R17.5	124/122	M	E	C	71dB	
	215/75R17.5	126/124	M	E	C	71dB	
		135/133	J	E	C	71dB	
	225/75R17.5	129/127	M	E	C	71dB	
	235/75R17.5	132/130	M	E	C	71dB	
		143/141	J	E	C	71dB	
	245/70R17.5	136/134	M	E	C	71dB	
		143/141	J	E	C	71dB	
	225/70R19.5	128/126	M	E	C	71dB	
	245/70R19.5	136/134	M	E	C	71dB	
		143/141	J	E	C	71dB	
	265/70R19.5	140/138	M	E	C	71dB	
		143/141	J	E	C	71dB	
	285/70R19.5	146/144	M	E	C	71dB	
		150/148	J	E	C	71dB	
	275/70R22.5	148/145	M	E	C	71dB	
	275/80R22.5	149/146	M	E	C	71dB	
	295/80R22.5	154/151	M	E	C	71dB	
	315/70R22.5	154/150	M	E	C	71dB	
		154/151	M	E	C	71dB	
	315/80R22.5	157/154	M	E	C	71dB	
	GALAXY AF186 /P32	7.00R16LT	118/114	K			
		7.50R16LT	124/120	K			
8.25R16LT		128/124	K				
8.25R20		139/137	K				
9.00R20		144/142	K				
10.00R20		149/146	K				
11.00R20		152/149	K				

PATTERN	SIZE	LOAD INDEX	SPEED RATING			
GALAXY AF186 /P32	12.00R20	154/151	K			
		156/153	K			
CONQUEROR AF189 /P41	8.25R16LT	128/124	D			
	10.00R20	149/146	D			
	11.00R20	152/149	D			
	12.00R20	154/151	D			
CONQUEROR AF197 /P22	385/65R22.5	160	K	C	C	72dB
CONQUEROR AF281 /P33	10.00R20	149/146	L			
CONQUEROR AF304 /P33	11.00R20	154/151	L			
	12.00R20	154/151	L			
CONQUEROR AF310 /P22	10.00R20	149/146	L			
GALAXY AF327 /P12	385/65R22.5	160/162	K/L	D	C	75dB
	10.00R20	149/146	L	E	D	75dB
CONQUEROR AF557 /P23	11.00R22	154/151	L	E	D	75dB
	12R22.5	152/149	M	E	D	75dB
	295/60R22.5	150/147	L	E	C	75dB
	295/80R22.5	154/151	M	E	C	75dB
	305/70R22.5	152/148	M	E	C	75dB
		154/149	L	E	C	75dB
	305/75R24.5	154/149	L	E	C	75dB
		152/148	M	E	C	75dB
	315/60R22.5	152/148	M	E	C	75dB
		154/150	M	E	C	75dB
	315/70R22.5	154/150	M	E	C	75dB
		154/151	M	E	C	75dB
315/80R22.5	157/154	M	E	C	75dB	
GALAXY AF558 /P13	11R22.5	146/143	M			
	11R24.5	149/146	L			
	285/75R24.5	147/144	L			
	295/75R22.5	146/143	L			
CONQUEROR AF559 /P30	11R22.5	146/143	M			
	11R24.5	149/146	L			
	285/75R24.5	147/144	L			
GALAXY AF667 /P13	295/75R22.5	146/143	L			
	11.00R22	154/151	L	C	C	71dB
	12R22.5	152/149	M	C	C	71dB
CONQUEROR AF717 /P15	275/80R22.5	149/146	M	C	B	71dB
	295/60R22.5	150/147	L	C	B	71dB
	295/80R22.5	154/151	M	C	B	71dB
	305/70R22.5	152/148	M	C	B	71dB
		154/149	L	C	B	71dB
	305/75R24.5	154/149	L	C	B	71dB
		152/148	M	C	B	76dB
	315/60R22.5	152/148	M	C	B	71dB
		154/150	M	C	B	71dB
	315/70R22.5	154/150	M	C	B	71dB
154/151		M	C	B	71dB	
CONQUEROR AF717 /P15	315/80R22.5	157/154	M	C	B	71dB
	11.00R22	154/151	L	E	C	75dB
	11R22.5	146/143	L	E	C	75dB
12R2 .5	152/149	M	E	C	75dB	

PATTERN	SIZE	LOAD INDEX	SPEED RATING			
CONQUEROR AF717 /P15	13R22.5	154/151	L	E	C	75dB
	205/75R17.5	124/122	M	E	C	75dB
	215/75R17.5	126/124	M	E	C	75dB
	225/75R17.5	129/127	M	E	C	75dB
	235/75R17.5	132/130	M	E	C	75dB
	245/70R17.5	136/134	M	E	C	75dB
	225/70R19.5	128/126	M	E	C	75dB
	245/70R19.5	136/134	M	E	C	75dB
	265/70R19.5	140/138	M	E	C	75dB
	285/70R19.5	146/144	M	E	C	75dB
	275/70R22.5	148/145	L	E	C	75dB
	275/80R22.5	149/146	M	E	C	75dB
	295/80R22.5	154/151	M	E	C	75dB
	315/70R22.5	154/150	M	E	C	75dB
	315/80R22.5	154/151	M	E	C	75dB
		157/154	M	E	C	75dB
GALAXY AF737 /P41	14.00R20		H			
GALAXY AF867 /P14	11.00R22	154/151	L	C	C	71dB
	11R22.5	146/143	M	C	C	71dB
	12R22.5	152/149	M	C	C	71dB
	13R22.5	154/151	L	C	C	71dB
	295/80R22.5	154/151	M	C	C	71dB
	315/80R22.5	154/151	M	C	C	71dB
		157/154	M	C	C	71dB
ENERGY AEL2 /P14	295/80R22.5	154/151	L	D	D	74dB
	295/80R22.5	152/148	M	D	D	74dB
ENERGY AER2 /P21	11R22.5	146/143	M			
ENERGY ADL2 /P16	315/70R22.5	154/150	L	D	C	74dB
	315/70R22.5	152/148	M	D	C	74dB
	315/80R22.5	156/150	L	D	C	74dB
	315/80R/22.5	154/150	M	D	C	74db
CONQUEROR ADR2 /P23	10.00R20	149/146	L			
	11.00R20	152/149	L			
ENERGY ADR3 /P24	295/80R22.5	154/151	L	D	C	74dB
	295/80R22.5	152/148	M	D	C	74dB
	315/70R22.5	154/150	L	D	C	74dB
	315/70R22.5	152/148	M	D	C	74dB
	315/80R22.5	156/150	L	D	C	74dB
	315/8022.5	154/150	M	D	C	74dB
ENERGY ADM3 /P37	10.00R20	149/146	K	C	C	73dB
ENERGY ADM5 /P37	10.00R20	149/146	K			
ENERGY ATL3 /P16	11R22.5	146/143	M			
	11R24.5	149/146	L	E	D	76dB
	285/75R24.5	147/144	L			

PATTERN	SIZE	LOAD INDEX	SPEED RATING			
ENERGY ATL3 /P16	295/75R22.5	146/143	L			
ENERGY ATR2 /P24	385/55R22.5	160	J	C	C	71dB
	385/65R22.5	160	K	C	C	72dB
ENERGY ATR3 /P25	385/65R22.5	158	L	C	C	72dB
	385/65R22.5	160	K	C	C	72dB
ENERGY ATR5 /P25	385/65R22.5	160	K	C	C	72dB
	385/65R22.5	158	L	C	C	72dB
ENERGY ATR6 /P26	385/55R19.5	156	J	C	C	71dB
	385/55R22.5	160	J	C	C	71dB
	425/65R22.5	165	K	C	C	71dB

Before fitting, it is essential to check the different markings to ensure that the tyres meet the maximum load and speed possibilities and/or the regulations in force.

SPEED INDEX

SI	B	C	D	E	F	G	J	K	L	M	N	P	Q	R
km/h	50	60	65	70	80	90	100	110	120	130	140	150	160	170

PATTERN SIZE	ADL2	AEL2	ATL3	AER2	ADR2	ADR3	ADM3	ADM5	ATR2	ATR3	ATR5	ATR6										
	P16	P14	P16	P21	P23	P24	P37	P37	P24	P25	P25	P26										
6.50R16LT																						
7.00R16LT																						
7.50R16LT																						
7.50R20																						
8.25R16LT																						
8.25R20																						
9.00R20																						
10.00R20																						
11.00R20																						
11.00R22																						
12.00R20																						
12.00R24																						
8R22.5																						
9R22.5																						
10R22.5																						
11R22.5																						
11R24.5																						
12R22.5																						
13R22.5																						
205/75R17.5																						
215/75R17.5																						
225/70R19.5																						
225/75R17.5																						
235/75R17.5																						
245/70R17.5																						
245/70R19.5																						
255/70R22.5																						
265/70R19.5																						
275/70R22.5																						
275/80R22.5																						
285/70R19.5																						
285/75R24.5																						
295/60R22.5																						
295/75R22.5																						
295/80R22.5																						
305/70R22.5																						
305/75R24.5																						
315/60R22.5																						
315/70R22.5																						
315/80R22.5																						
385/55R19.5																						
385/55R22.5																						
385/65R22.5																						
425/65R22.5																						
14.00R20																						



European Tyre Labelling

REGULATION (EC)NO 1222/2009

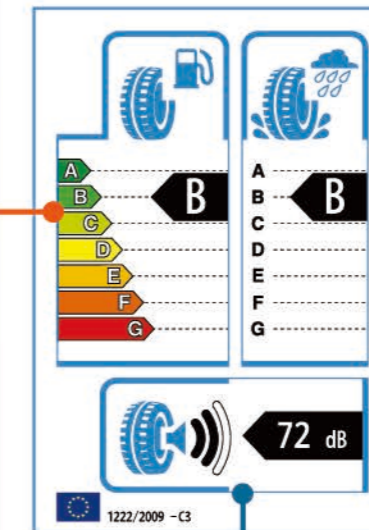
As of 1 November 2012, New tyre label regulations are in force to help promote safer, more economical and more environmentally friendly road transport in Europe. The new labels indicate tyre performance in three key areas: braking in wet conditions, exterior noise and rolling resistance.

FUEL EFFICIENCY

7 classes - from A (most efficient) to least efficient

The effect varies depending on the vehicle and driving conditions. However, the difference between a G and an A class for a complete set of tyres could reduce fuel consumption for trucks up to 20%.*

* Source: European Commission's impact Assessment SEC (2008) 2860.



WET GRIP

7 classes - from A (best wet grip) to worst wet grip

The effect may vary depending on the vehicle and driving conditions. However, in the case of full braking, the difference between a G and an A class for a complete set of tyres could be up to 30% shorter braking distances.

EXTERIOR NOISE

Exterior noise levels are split into 3 categories and measured in decibel (dB) in comparison with the new European tyre exterior noise levels to be introduced until 2016. The noise pictogram displays the categories while the black arrow next to the pictogram indicates the noise level as an absolute value.

Note that external tyre rolling noise is not related to interior vehicle noise

- 1 black sound wave (=3dB already less than the future European limit)
- 2 black sound waves (= already compliant with the future European limit)
- 3 black sound waves (= compliant with the current European limit)

OB LIGATION:
The Regulation requires that tyres* produced after 30 June 2012 and on sale in the EU from November 2012 will show grade of Rolling Resistance, Wet Grip and Noise in all technical promotion materials.

* Some tyres are excluded, such as retread, professional off-road or studded tyres.